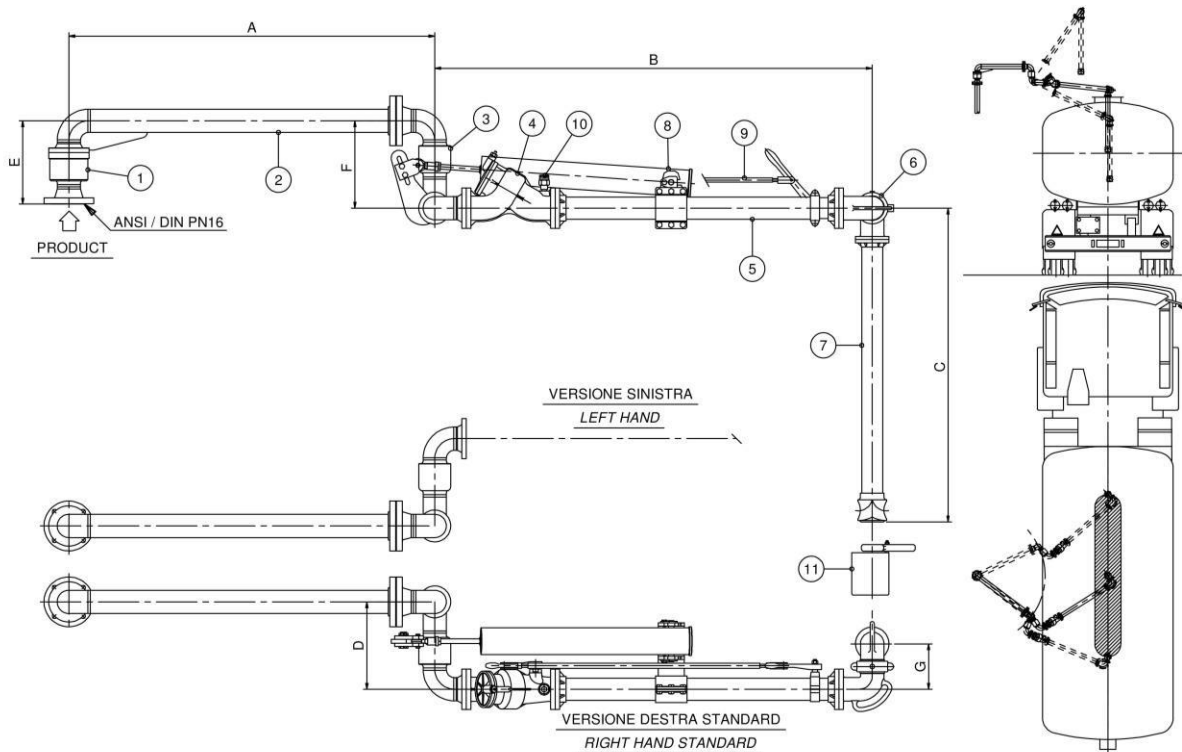




Loading arm from above to long range of action Model 2239-UB with self-supporting rotating section

INFILTEK



Condizioni Operative

DESIGN PRESSURE	10.0 Bar G
TEST PRESSURE	15.0 Bar G
DESIGN TEMPERATURE	-15° C / +65°C
SEAL MATERIAL	VITON Nitrile (Buna N) VITON Speciale (*)

RECOMENDED FLOW

3"-75 mc/h Max
4"-125 mc/h Max
6"- 280 mc/h Max

N. Description

1	High load base joint style 30
2	Revolving section
3	Double joint style 70
4	Delivery valve (with/without stop)
5	Primary Tube
6	Drop Tube Swivel
7	Drop tube with "T" Terminal
8	Spring Balance Unit
9	Valve remote link
10	Inlet for optional vacuum breaker 3/8" NPT
11	Optional clamp on drip bucket

Dwg/Mod

2174-HD
.
2174
504
.
536
2359-T
05182
2356
2336
2408

Standard Dimensions

Dn.	3"	4"	6"
A	800/2000	850/2000	1000/2000
B	2100	2100	2100
C	1600	1600	1600
D	296	353	525
E	318	375	491
F	296	353	525
G	174	201	278
Weight KG	125	165	335

Note

Also available the Mod. 2239-UA version with intermediate joint Pos.3 facing upwards

Options

Custom Dimensions available

