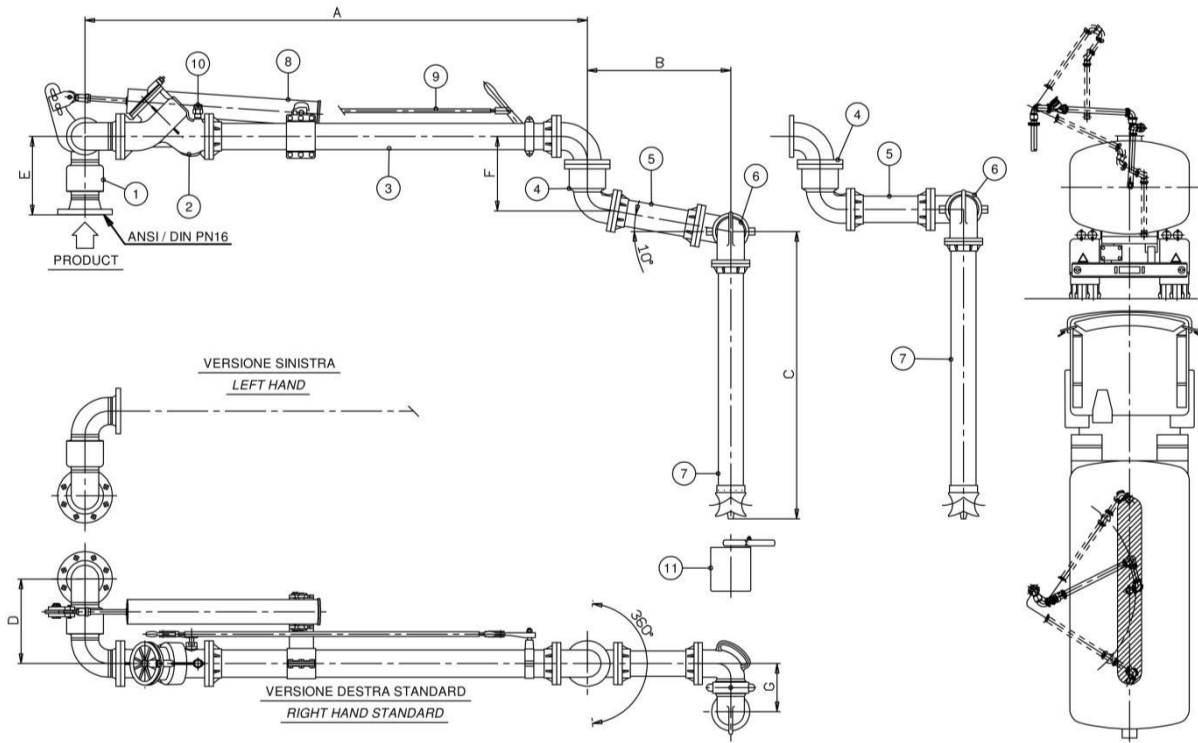


Variable range top loading arm 621-BC / 721-BC Model



Operating Conditions

| | |
|--------------------|--|
| Design Pressure | 10.0 Bar G |
| Test Pressure | 15.0 Bar G |
| Design Temperature | -15° C / +65°C |
| Seal Material | VITON Nitrile (Buna N) Special VITON (*) |

| | |
|-----------|-----------------------------------|
| Flow Rate | 3"-75 mc/h Max 4"-125 mc/h Max |
|-----------|-----------------------------------|

Standard Dimensions

| Dn. | 3" | 4" |
|--------|------|------|
| A | 2100 | 2100 |
| B | 600 | 600 |
| C | 1600 | 1600 |
| D | 296 | 353 |
| E | 289 | 328 |
| F | 238 | 305 |
| G | 174 | 201 |
| Weight | 90 | 115 |

Notes

- (*) Swivels 2174 Mod. installed on 621-BC Mod. loading arms
- Swivels 2004 Mod. installed on 721-BC Mod. loading arms

Options

- Pos.7 with flute beak end (2359-BF)
- Pos.7 with flow deflector (2359-D)
- Microswitch to signal valve opened/closed
- Rotational microswitches to signal arm side in use
- (*) Suitable for BIO-Products
- NDT test (X-Ray-LP-MT) available on request

N. Description

| | |
|----|---|
| 1 | Style 50 double swing joint |
| 2 | Loading valve (stay/hold-open) |
| 3 | Tube assembly |
| 4 | Intermediate swivel |
| 5 | Secondary tube assembly (horizontal or slopped) |
| 6 | Drop tube swivel |
| 7 | Drop tube with "T" deflector |
| 8 | Spring balancing cylinder |
| 9 | Valve remote control |
| 10 | 3/8" NPT Vacuum breaker |
| 11 | Nipper drip bucket |

Dwg/Mod

| |
|----------|
| 2174 (*) |
| 2004 (*) |
| 504 |
| . |
| C-3443 |
| 536 |
| 2359-T |
| 05182 |
| 2356 |
| 2336 |
| 2408 |

